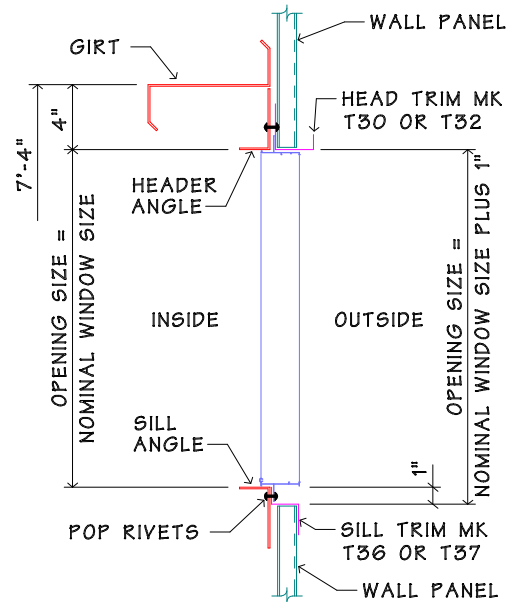
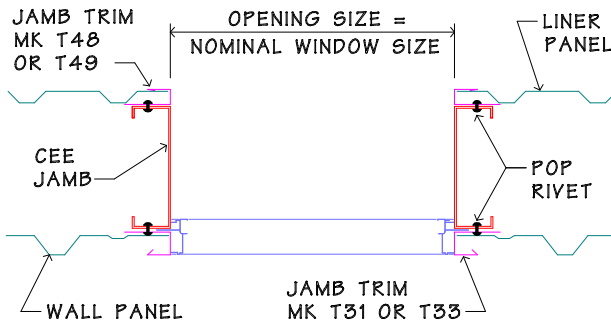


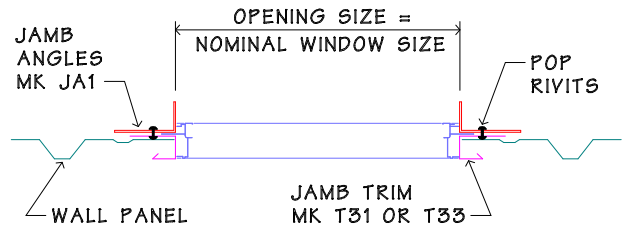
**VERTICAL SECTION THRU WINDOW
WITH LINER PANEL**



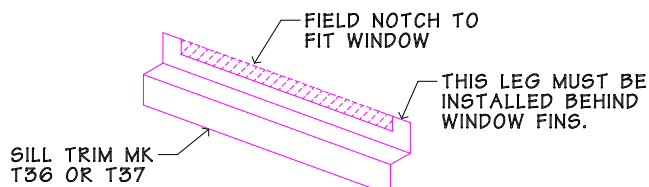
VERTICAL SECTION THRU WINDOW



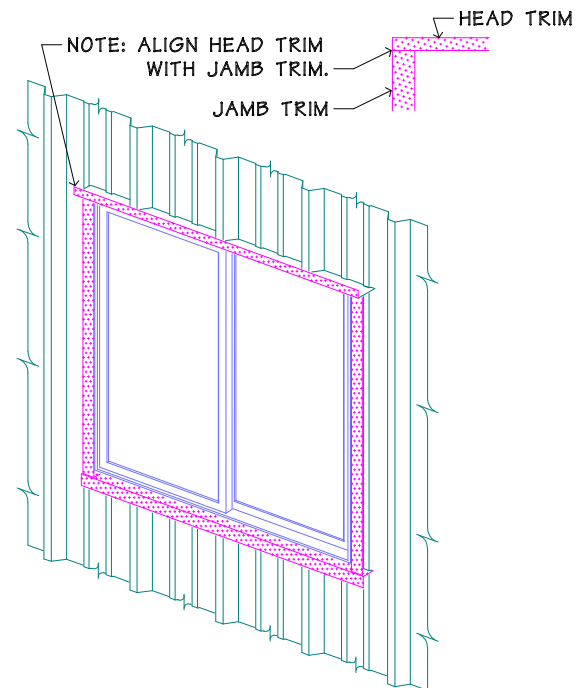
**HORIZONTAL SECTION THRU WINDOW
WITH LINER PANEL**



HORIZONTAL SECTION THRU WINDOW




SILL TRIM FIELD MODIFICATION DETAIL



NOTES:

1. FIELD CUT HEADER AND SILL ANGLES FROM STOCK LENGTHS TO FORM FRAMED OPENING FOR WINDOW. (NOT REQ'D. FOR WINDOWS WITH 8x2½C FRAMES)
2. ATTACH WINDOW TO FRAMED OPENING WITH POP RIVETS.
3. ATTACH TRIM AROUND WINDOW WITH POP RIVETS. SILL TRIM MK T36 OR T37 TO BE FIELD NOTCHED AROUND WINDOW, (SEE DETAIL) VERTICAL LEG MUST BE INSTALLED BEHIND WINDOW FINs.
4. CAULK WINDOW TO TRIM JOINT, ALL AROUND. (OPTIONAL)
5. INSTALL WALL PANELS AROUND WINDOW.
6. IF BUILDING HAS LINER PANELS, INSTALL LINER TRIM AND PANELS SIMILAR TO EXTERIOR.
7. FOR RETROFIT INSTALLATION, REMOVE WALL PANELS AS REQ'D. AND PROCEED TO NOTE 1.

 <p>P.O. BOX 130819 • TYLER, TEXAS 75713</p>	ERECTION STANDARDS	DRAWING
	CONVENTIONAL WINDOW INSTALLATION	ES-191